

SECTION 36, T.7N., R.2W., S.L.B.&M.

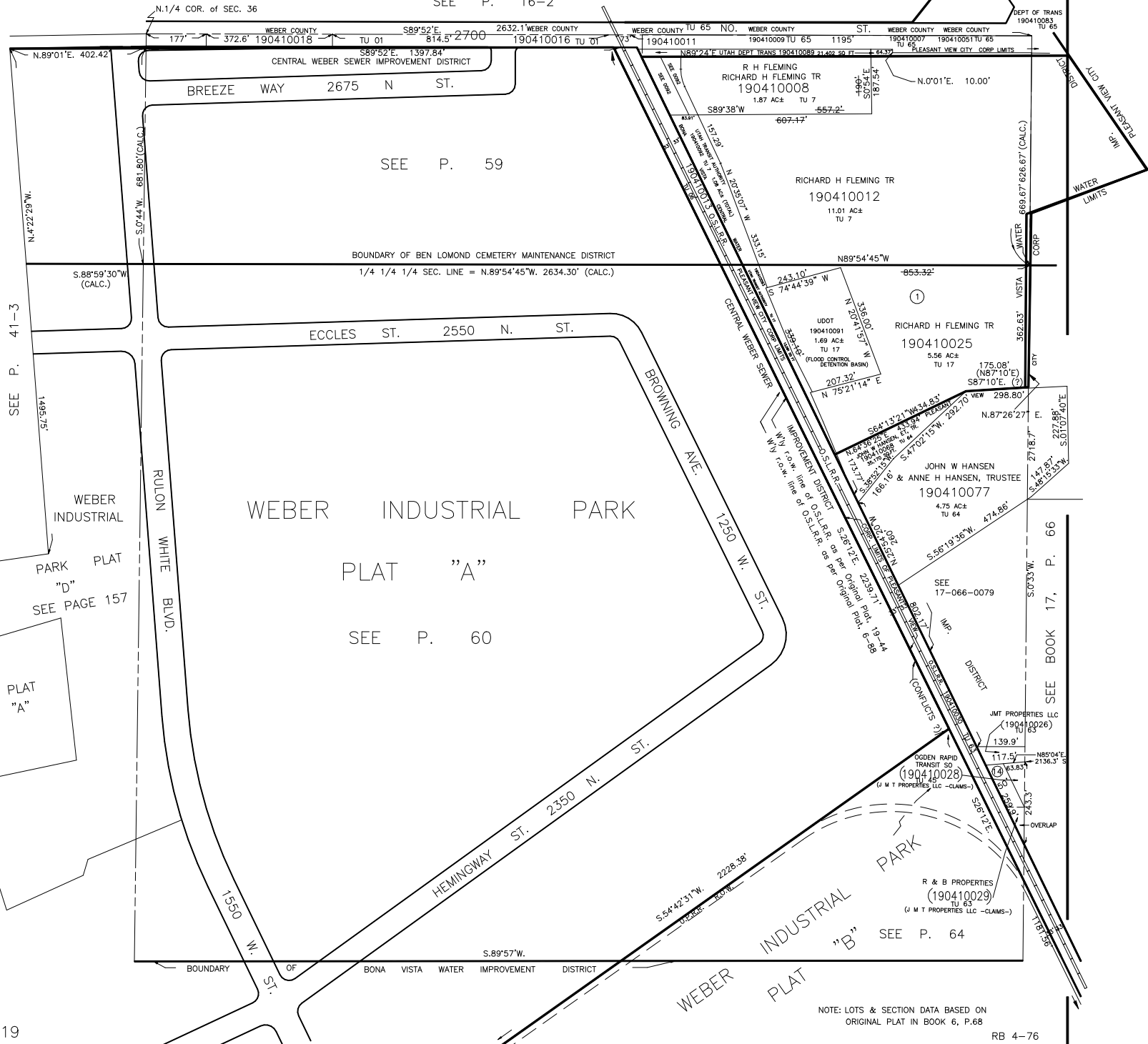
TAXING UNIT: 1,6,7,11,17,45,63,64

IN PLEASANT VIEW CITY, FARR WEST CITY & WEBER COUNTY

SCALE 1" = 200'

PREFIX : 19-041
ALSO SEE P. 41-2,3

SEE P. 16-2



SEE P. 41-3

WEBER INDUSTRIAL PARK PLAT "D" SEE PAGE 157

PLAT "A"

SEE P. 59

WEBER INDUSTRIAL PARK PLAT "A"

SEE P. 60

SEE P. 64

SEE BOOK 17, P. 66

NOTE: LOTS & SECTION DATA BASED ON ORIGINAL PLAT IN BOOK 6, P.68